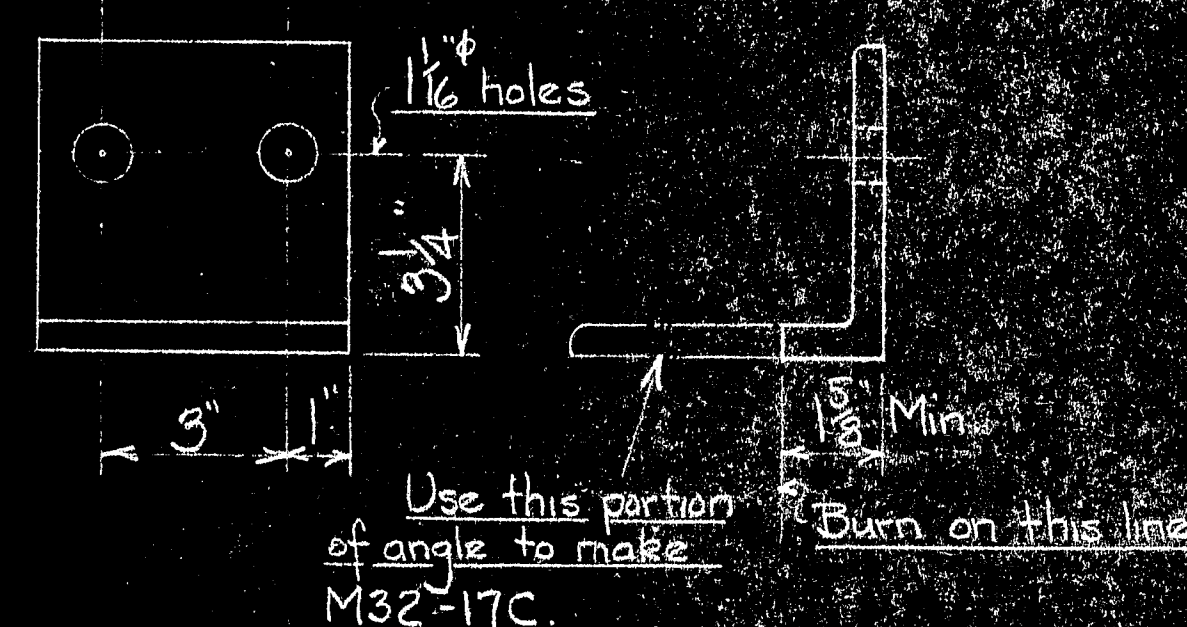
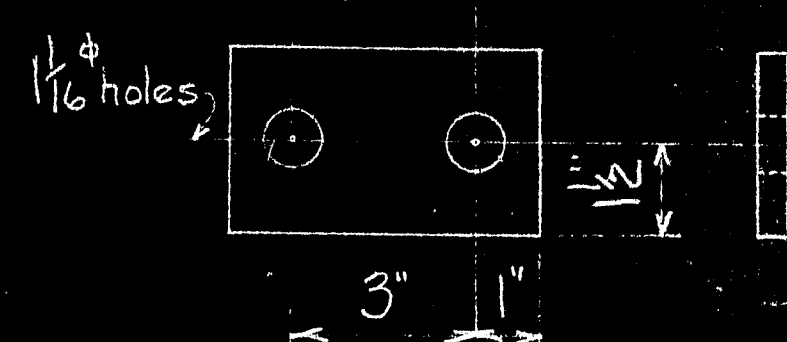


M32-17A - ANGLE



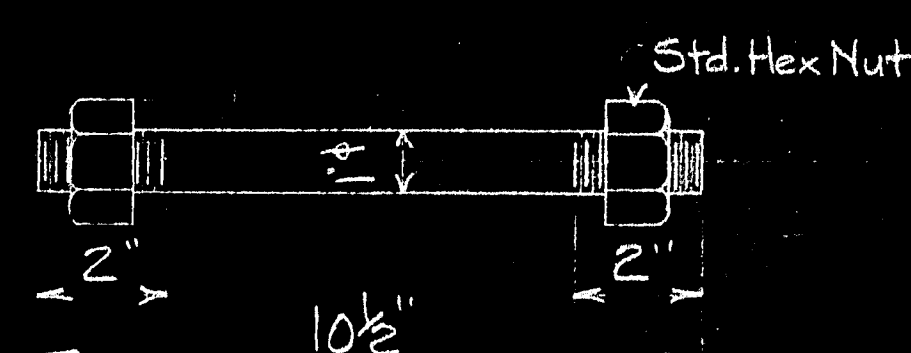
M32-17B - ANGLE

Make from 5x5x1/2x0'-5". - See note above.

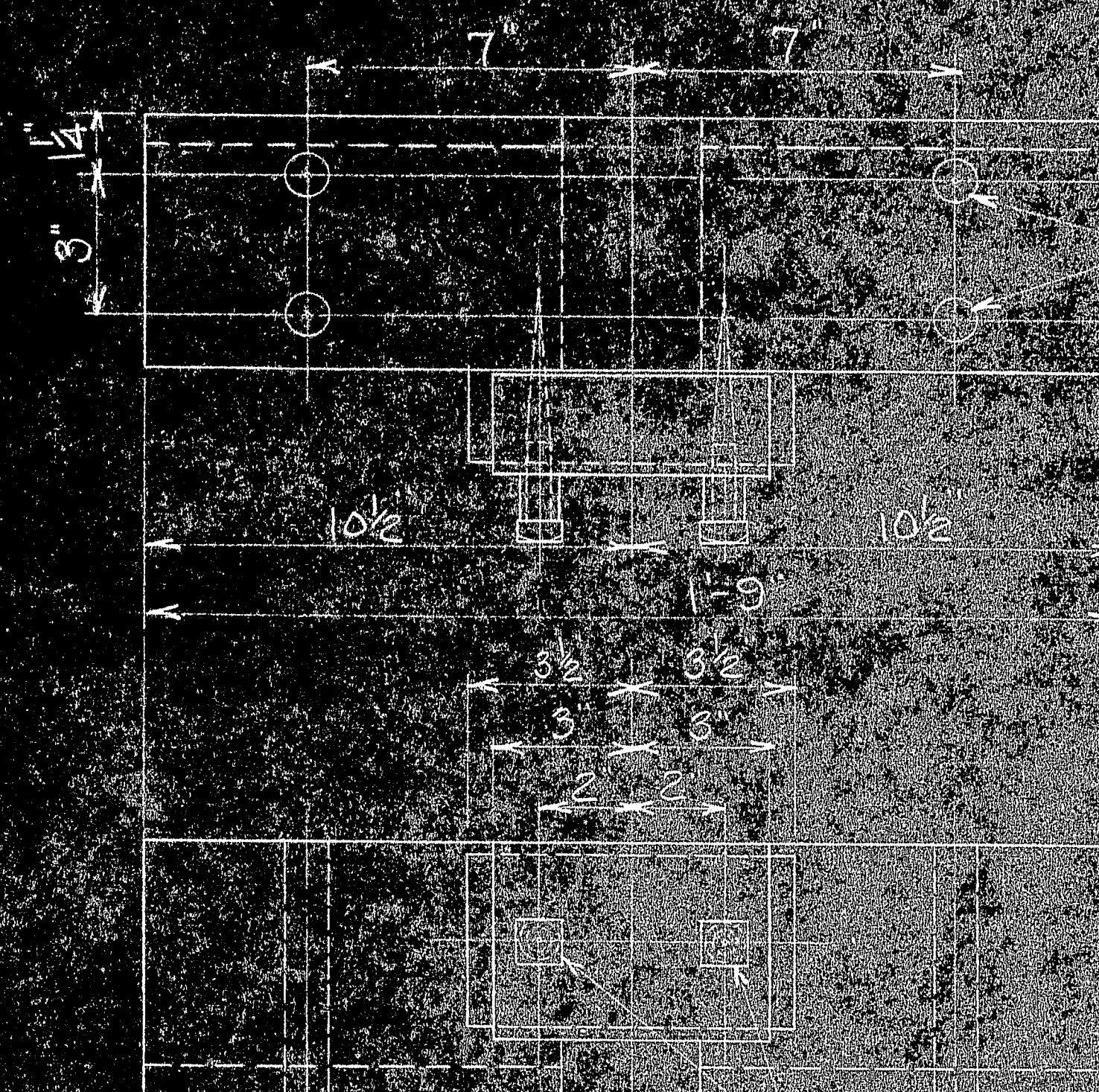


M32-17C - PLATE

Make from piece of M32-17B (See detail)



M32-17D - BAR BOLT

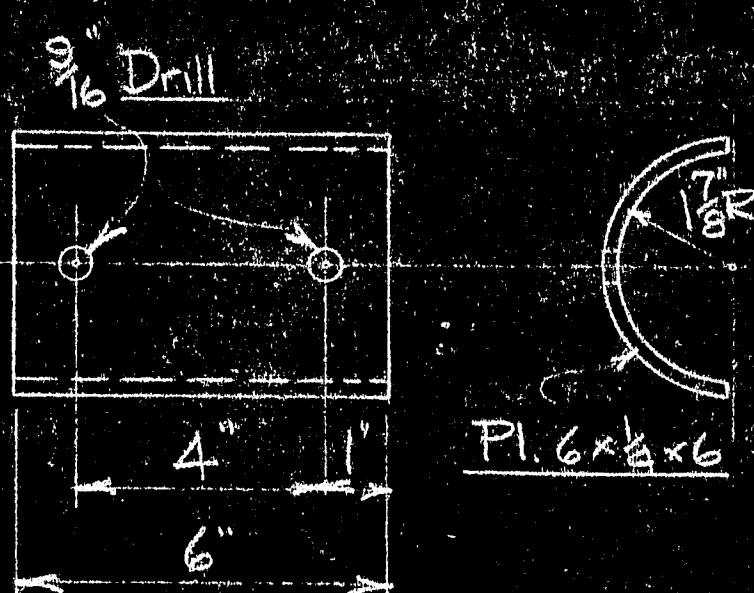


M32-17E - TIMBER



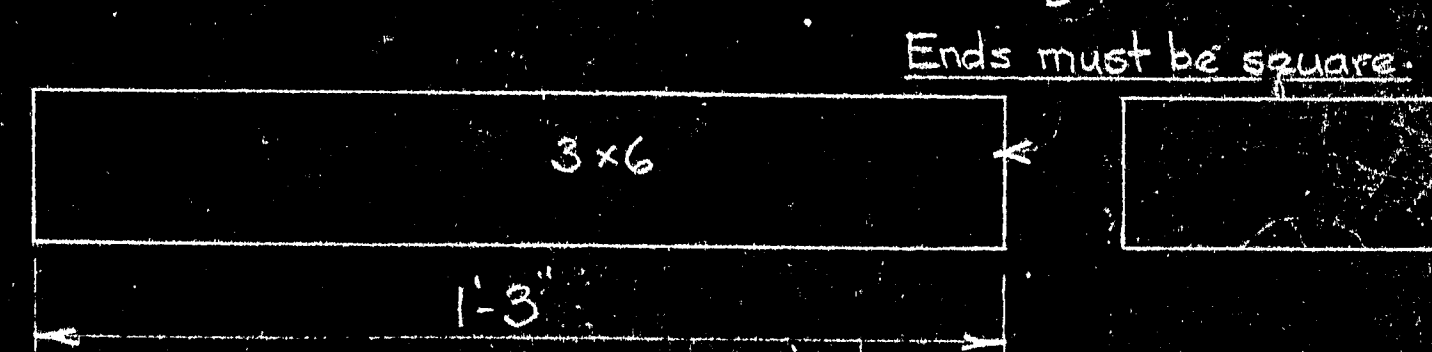
M32-17F - TIMBER

See M32-17E for assembly



M32-17G - BENT PLATE

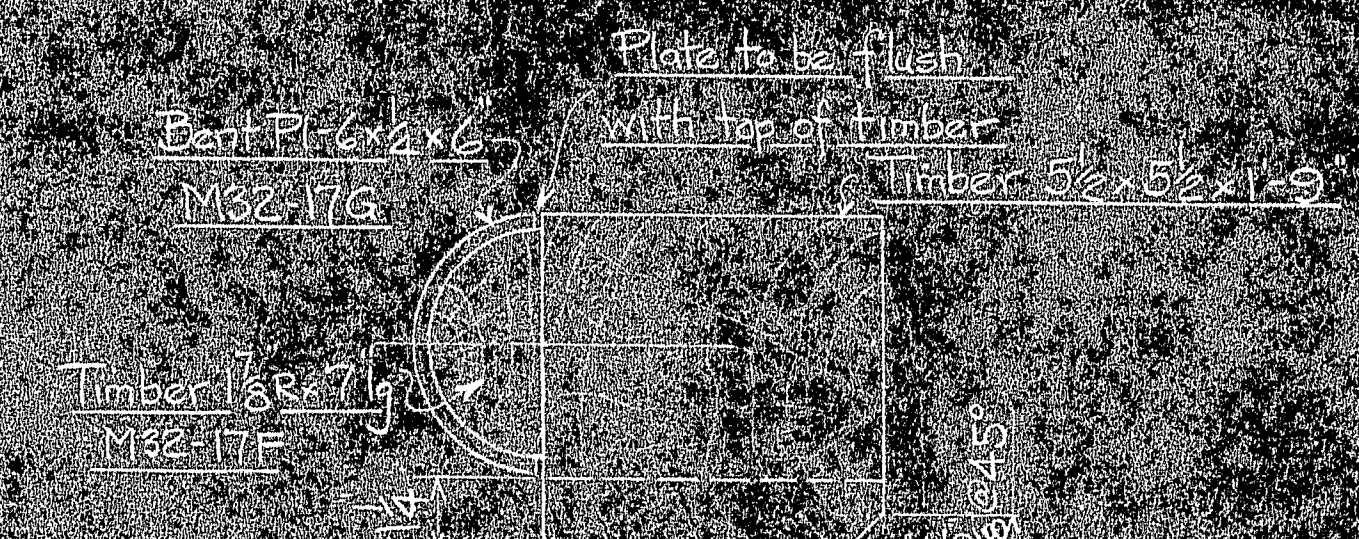
See M32-17E for assembly



M32-17H - TIMBER



M32-17L - SHIM 1/4 THICK
M32-17M - SHIM 3/8 THICK



M32-17J PIPE SPACER

M32-17M	120	Steel	5/12	Shim	
M32-17L	120	Steel	5/12	Shim	
M32-17K	250		5/11-13	1/2 Lag Screw 5 lg.	
M32-17J	240	Pipe	5/12	Pipe Spacer	
M32-17H	60	Y.P.	5/12-13	Timber	
M32-17G	120	Steel	5/12-13	Bent Plate	
M32-17F	120	Y.P.	5/12-13	Timber	
M32-17E	120	Y.P.	5/12-13	Timber	
M32-17D	480	Steel	5/11-13	Bar Bolt	
M32-17C	240	Steel	5/10-13	Plate	See Note
M32-17B	240	Steel	5/10-13	Angle	See Note
M32-17A	120	Steel	5/10-13	Angle	

MARK REQ'D MAT'L REQ. NO. NAME REMARKS

BILL OF MATERIAL

JOHN A. ROEBLING'S SONS CO., TRENTON, N. J.

DEER ISLE BRIDGE

TEMPORARY STAYS

TRUSS CONNECTION DETAILS

BY REVISIONS DATE

APPROVED SCALE 3'-0"

DES. DR. 6-21-43

TR. CH. M32 17

